

Laurentian Lakes Chapter

- Formed in 2006 with about 45 members in the Ponsford, Detroit Lakes, Fargo-Moorhead, and Frazee areas.
- Facilitates volunteer work on the NCNST from Itasca St. Park to the Becker-Otter Tail Co. border and is responsible for maintaining 25+ miles of NCT.
- The Chapter is developing approximately 40 more miles of the NCT in Becker County south to Frazee. Much of this route will follow the Laurentian (north-south Continental) Divide and go near numerous lakes.
- The Chapter holds membership meetings quarterly and a variety of social events. Join us for a hike or to help build, maintain, and promote the trail.

NCT Trailheads

- Itasca State Park's South Entrance off of US Hwy 71. Year around parking and trail info available.
- Gartner Farm Rd.—located off State Hwy 113 about 5 miles west of US Hwy 71. Limited, seasonal parking available.
- Anchor Matson Rd.—located about 3 miles north of State Hwy 113. Seasonal parking and trail info available.
- Headquarters / Co. Hwy 39—located about 2 miles north of State Hwy 113. Year round parking, camping, and trail info available.
- State Hwy 113—located about 1 mile west of Becker Co. 37 intersection. Year round parking and trail info available.
- Elbow Lake Rd.—located about 1.5 miles west of Becker Co. 37. Year round parking, camping, and trail info available.

Suggested NCT hikes

- Itasca St. Park segment - from the US 71 trailhead, it is 6 mi. to the Gartner Farm trailhead or 10.5 mi. to the Anchor Matson trailhead.
- Anchor Matson trailhead to Tim-Don-Del Hill vista (1.5 miles one-way) with a fine view south to the Smoky Hills.
- Co. 39 trailhead to St. Hwy 113 trailhead—5.6 mi. one-way through mixed forest and partly along the Laurentian Divide. Continue south for superb fall colors.
- St. Hwy 113 trailhead to Elbow Lake Rd.—4.5 mi. one-way through mixed forest continuing on the Divide.

More hikes are listed on our Chapter website under Suggested Hikes. For a map to hike with, purchase NCTA Hiking Map #MN10, which has been recently updated.

About the North Country Trail

When complete, the North Country National Scenic Trail will be the longest continuous hiking trail in the United States spanning more than 4,600 miles. Designed as a premier hiking trail, similar to the Appalachian Trail, it links scenic, natural, recreation, historic and cultural areas through New York, Pennsylvania, Ohio, Michigan, Wisconsin, Minnesota, and North Dakota.

The National Park Service administers the Trail in cooperation with all levels of government, the North Country Trail Association, and private interests.

The North Country Trail Association is a membership-driven, non-profit organization committed to developing, maintaining, and promoting the North Country National Scenic Trail through a national network of volunteers, chapters, partner organizations and government agencies.



Information on how you can become a member or volunteer to help build, maintain and promote the North Country National Scenic Trail can be found at:

www.northcountrytrail.org

or by calling: 1-866-HIKE-NCT (445-3628)

or emailing: hq@northcountrytrail.org



North Country National Scenic Trail

in Becker & Clearwater Counties, MN



Laurentian Lakes Chapter

Contact Info:

Website: www.northcountrytrail.org/lc

Email: llc@northcountrytrail.org

Phone: (218) 573-3243



To learn more about our activities, check out our Meetup page at

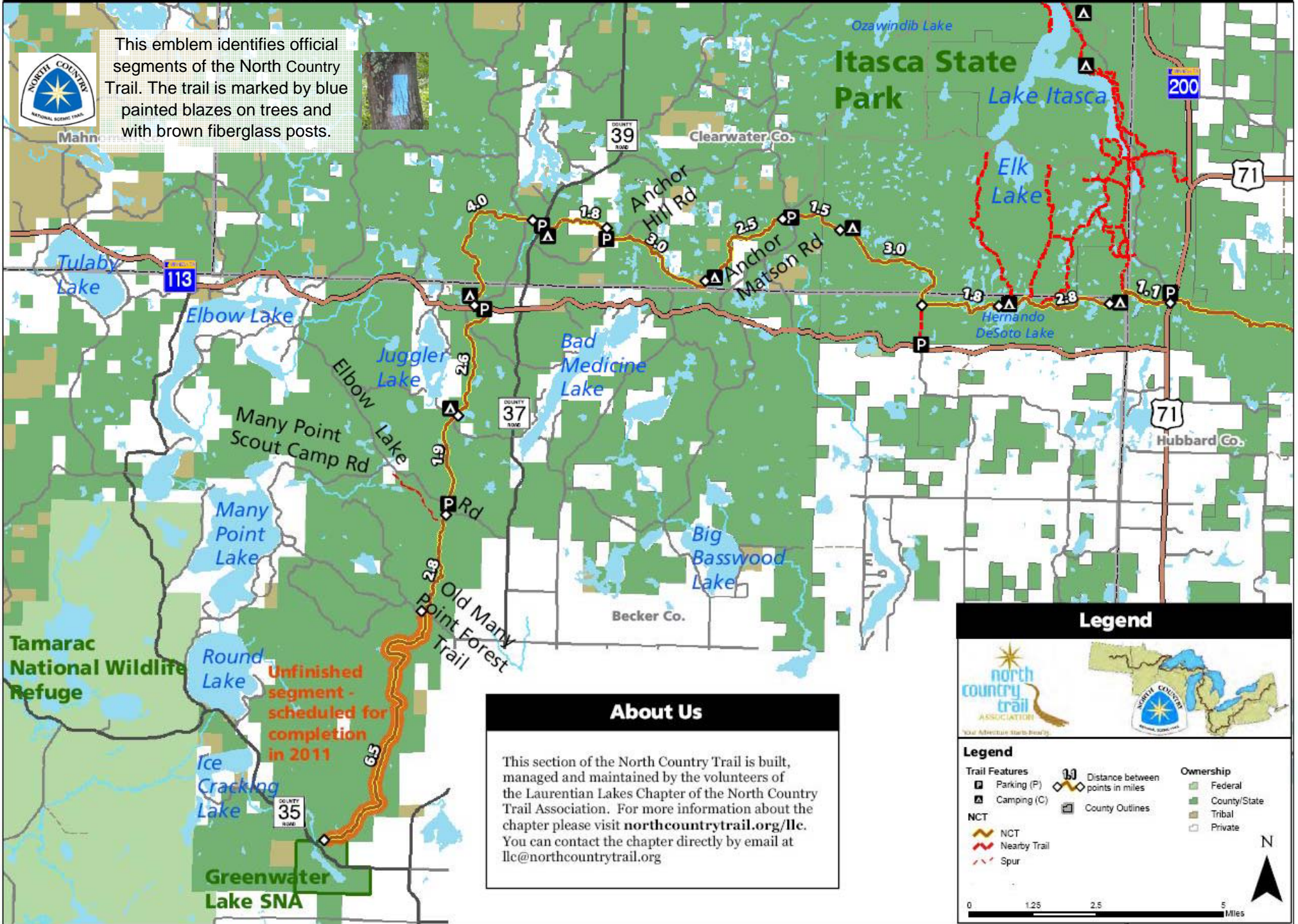
www.meetup.com/HikeNCTinMN/

North Country National Scenic Trail

Laurentian Lakes Chapter Area



This emblem identifies official segments of the North Country Trail. The trail is marked by blue painted blazes on trees and with brown fiberglass posts.



Unfinished segment - scheduled for completion in 2011

About Us

This section of the North Country Trail is built, managed and maintained by the volunteers of the Laurentian Lakes Chapter of the North Country Trail Association. For more information about the chapter please visit northcountrytrail.org/llc. You can contact the chapter directly by email at llc@northcountrytrail.org

Legend

Trail Features

- Parking (P)
- Camping (C)
- NCT
- Nearby Trail
- Spur

Distance between points in miles

Ownership

- Federal
- County/State
- Tribal
- Private

Legend

- County Outlines

0 1.25 2.5 5 Miles