



Current trail conditions on the Kekekabic Trail

As of 5/27/2026

Please check [here](#) for updates, alerts, and warnings about the Superior National Forest.

The Kekekabic Chapter of the North Country Trail Association annually organizes a number of clearing trips (5 multi day work crews were on various sections of the trail in May of 2026). Details on trail conditions are noted below.

1. The Kek is open **for both day and overnight use.**
2. Permits are required year round for all overnight use.
3. The season switches from quota to self-issued permits on 10/1 – 4/30. Find all the rules and regulations [here](#).
4. **Hikers should check for the latest updates [here](#).**

Maps:

The Kekekabic Trail Guide contains maps, GPS coordinates and trail information. The Guide is available at outdoor adventure stores and the [NCTA store](#).

[Avenza Maps](#) works with your smartphone's GPS to show your location on the Kekekabic Trail. You can also print out maps 85-92 of the NCTA's (free) downloadable [Minnesota Map Set](#). McKenzie Maps #7, 8, 9 include the Kekekabic Trail.

Current conditions:

Overall, the Kekekabic Trail is in good hiking condition, it should provide you with a great wilderness hike and experience. Kekekabic Chapter volunteers have been on the trail and a thru hike was completed on May 1. This report is the most up to date information available and will be helpful as you plan your hike for this summer and later this year.

**The first trail report of the year contained information on high water on the Agamok spillway due to spring runoff and high lake water levels. Water levels have receded in this area, conditions are back to normal in this area and should not have a problem passing through Agamok area.

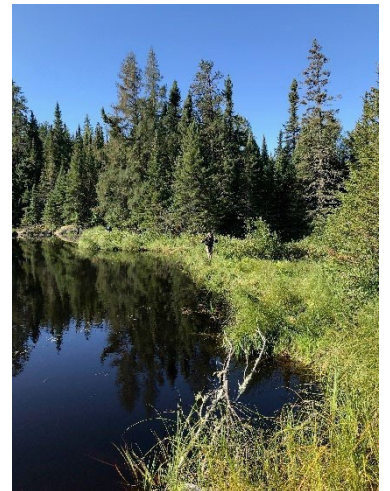
Here are things that hikers of the Kek are likely to experience trail:

- 1) Random blowdowns in places – trees are always falling.

- 2) Moderate to medium brush that obscures the tread in places, especially in the mid-to-late summer. Currently the section from Medas Lake campsite west to the Becosin/Benezie intersection has moderate brush, a clearing crew will be out to work in this area in September.
- 3) Beaver dam crossings – there are several spots where the Kek crosses atop beaver dams. Watch for the tread and cleared corridor to indicate the trail continuation as the beginning and end of beaver dams.
- 4) Wet spots in the trail – including the potential for beavers flooding longer stretches of the trail.
- 5) The trail has worn tread and the trail corridor is almost always discernible. Blue flagging has been posted in areas where there might be a question on trail direction. Please do not add or move flagging on the trail.
- 6) During the summer you will find ferns, honeysuckle, and raspberry growing along the trail, the tread may be obscured.
- 7) Trail conditions change as you enter various sections of the trail depending on the last time a crew was working in that particular area.
- 8) The best times to hike the Kek are May, late August, September and October.

How can you help?

1) If you do hike the Kekekabic, please take note of particular problem areas (with GPS coordinates, brief descriptions, and photos if possible) and send them to us at kek@northcountrytrail.org or share your photos on our Facebook group - facebook.com/groups/kekekabic/. *Note: If you are using the Avenza app with the NCTA-produced maps you can drop a Placemark at problem area and attach photos to the Placemark. Learn more at youtube.com/watch?v=QCDY9lcOPyE.* 2) Volunteer! Contact us as kek@northcountrytrail.org.



3) **Donate/join the NCTA Kekekabic Trail Chapter and support our volunteers' work!** You can do so at www.northcountrytrail.org/giving-membership