



Current trail conditions on the Kekekabic Trail

As of 7/11/2023

Please check [here](#) for updates, alerts, and warnings about the Superior National Forest.

The Kekekabic Trail Chapter of the North Country Trail Association annually organizes a number of clearing trips on the trail. Seven clearing trips were completed in May 2023, despite a late spring with ice and snow slow to melt. Additional clearing work is scheduled for June and September. Work will be focused on trail sections from Seahorse Lake to Howard Lake and Strup Lake to Kekekabic Lake overlook. Details on trail conditions are noted below.

1. *The Kek is open **for both day and overnight use.***
2. *Permits are required year round for all overnight use.*
3. *The season switches from quota to self-issued permits on 10/1. Find all the rules and regulations at https://www.fs.usda.gov/Internet/FSE_DOCUMENTS/stelprdb5127832.pdf.*
4. The Forest Service reduced the number of permits available at many BWCAW entry points for 2022, the number of permits available for the Kek from the Snowbank and Gunflint Trail trailheads remained unchanged.
5. **Hikers should check for the latest updates at <https://www.fs.usda.gov/superior/>.**

Find more valuable information about the Boundary Waters Canoe Area Wilderness in the - https://www.fs.usda.gov/Internet/FSE_DOCUMENTS/fseprd611535.pdf.

The Kekekabic Trail Guide has maps, GPS coordinates and trail information. The Guide is available at outdoor adventure stores and the NCTA store <https://shop.northcountrytrail.org>. Avenza Maps (www.avenzamaps.com, NCT 085 through 092) includes a downloadable track for the Kekekabic Trail. McKenzie Maps #7, 8, 9 include the Kekekabic Trail.

Current conditions:

Overall, the Kekekabic Trail is in good hiking condition, it should provide you with a great wilderness hike and experience. The Kekekabic Trail Club Chapter received numerous reports from hikers and runners from the early hiking season, this report is the most up to date information available and will be helpful as you plan your hike for 2023.

Here are things that hikers of the Kek are likely to experience trail:

- 1) Random blowdowns in places – trees are always falling.
- 2) Moderate to medium brush that obscures the tread in places, especially in the mid-to-late summer. Currently the sections with the most brush are Chub River Crossing to Howard Lake Campsite and Kekekabic Overlook Trail to Strup Lake.
- 3) Beaver dam crossings – there are several spots where the Kek crosses atop beaver dams. Watch for the tread and cleared corridor to indicate the trail continuation as the beginning and

end of beaver dams.

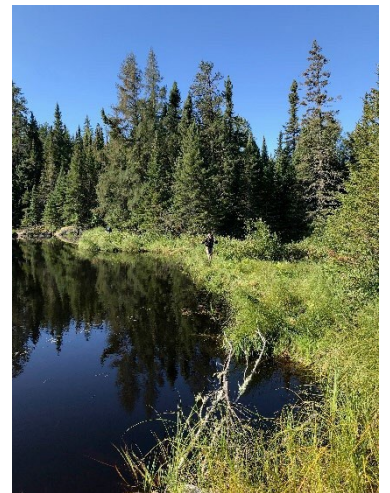
- 4) Wet spots in the trail – including the potential for beavers flooding longer stretches of the trail – e.g. by the Bingshick-Fay portage and Seahorse Lake sections.
- 5) Seahorse Lake: Hikers in May 2023 encountered several instances of water on the trail in excess of two feet in the Seahorse area. A temporary reroute can be found on the rock ledge, above the trail, look for blue flagging as you cross the stream coming from the east.
- 6) The trail has worn tread and the trail corridor is almost always discernible. Blue flagging has been posted in areas where there might be a question on trail direction. Please do not add or move flagging on the trail.
- 7) During the summer you will find ferns, honeysuckle, and raspberry growing along the trail, the tread may be obscured.
- 8) Trail conditions change as you enter various sections of the trail depending on the last time a crew was working in that particular area.
- 9) The best times to hike the Kek are May, late August, September and October.

Specific questions on trail conditions?

Send an email to the Chapter at kek@northcountrytrail.org.

How can you help?

- 1) If you do hike the Kekekabic Trail, please take note of particular problem areas (with GPS coordinates, brief descriptions, and photos if possible) and send them to us at kek@northcountrytrail.org or share your photos on our Facebook group - facebook.com/groups/kekekabic/. *Note: If you are using the Avenza app with the NCTA-produced maps you can drop a Placemark at problem area and attach photos to the Placemark. Learn more at youtube.com/watch?v=QCDY9IcOPyE.*
- 2) Volunteer on one of the Fall clearing trips (September 2023).



Enjoy the trail!

- 3) **Donate/join the NCTA Kekekabic Trail Chapter and support our volunteers' work!** You can do so at www.northcountrytrail.org/giving-membership