

Last updated April 2023

**Peter Wolfe Chapter hikes
And mile by mile Trail Guide:
Canyon Falls Trail
To Long Lake
at PWC's Eastern Terminus
PWC Segments 59->
[NCTA map for Segment 59 to chapter end](#)**

58a

**Spur from Junction of Segment 58/59:
From Canyon Falls Trail
to MDOT Park**

Length: 500 feet

Ownership: MDOT and Michigan Tech

Responsible for maintenance: Peter Wolfe Chapter Volunteers

General description of Spur and Park: This short 500 feet SPUR is on a hill between the NCT and the Canyon Falls MDOT Roadside Park. This Park has seasonal DAY-TIME ONLY parking for about 18 regular vehicles, and about 12 spots for longer rigs as seen on [this overhead map](#). It has seasonal waterless toilets, and water spicket on east side of a small block building. It also has trash receptacles, picnic tables, and kiosk we try to keep supplied with NCTA brochures. This spur trail crosses snowmobile trail #8 which is gated closed in the summer. The spur joins the NCT at a post with a directional NCT sign that says 85 miles to Marquette. See next segment for overnight parking option since this MDOT parking lot is for daytime use only.

Trail conditions: The spur trail is a wide, somewhat steep natural surface trail, somewhat eroded. Be cautious not to trip on boulders on this spur between the parking lot and the NCT.

Winter: Use caution in winter when crossing the active snowmobile trail. The MDOT parking area has [a gate](#) that is locked about November 1st at the US41 entrance. No overnight winter parking at the gate. Many folks park there in winter to snowshoe to the Falls, so park perpendicular to the road to maximize parking spots so you do not get blocked in. Cars parked on US41 are ticketed.

NOTE: From US-41 here, it is 9 miles north on the highway to L'Anse and 91 miles on the NCT to the nearest small store in Marquette.

Segment 59

Canyon Falls Trail

to Humpback Bridge at Sturgeon River

Length: 1.62 miles

Ownership: private ownership

Responsible for maintenance: Peter Wolfe Chapter Volunteers

Developments along trail: There is a post directional NCT sign at the west end of this Segment that says 85 miles to Marquette. *It is actually 91 miles to the nearest store in Marquette from this sign!* There are more signs on trail as it goes *under* US41 close to the west end of the Segment and where the trail goes off the snowmobile trail #8 immediately east of US41. There is another post directional NCT sign at the east end near the Humpback bridge over the old Sturgeon River; the NCT does NOT go across the Humpback bridge. Here is [some history about that bridge](#) that is one of just a few remaining with that design. Locals call this bridge the Humpback Bridge, others call it a [camelback bridge](#) like others built with the same design in the 1920s.

Future short boardwalks will be put on the trail where needed when permission is obtained.

General description of segment: The west end of Segment 59 begins at the post directional NCT sign that says 85 miles to Marquette, the trail Ys to the right ie south and goes a short distance on snowmobile trail #8 which goes UNDER US 41. *Immediately after* that underpass, the trail goes off the snowmobile trail into the forest towards the river and mostly follows the river but goes up and down some steep benched hills on the north side of the river when needed to stay dry. About halfway thru, there is flat rock along the river where folks like to sit on the rocks or swim in the cool shallow water there. Watch for any poison ivy in the 50 feet between the NCT and the flat rock. The trail follows the river's northside going upstream then at the end of this segment, it crosses OLD US41 near the north end of the Humpback bridge and stays north of the river; the NCT does NOT go across the Humpback bridge.

Trail conditions: This trail is blue paint blazed; it is a new trail and still needs work, but a nice hike mostly along the river. Being so close to the river, it is prone to be wet or muddy early in the season and has a stream crossing. Maintained and blazed annually by PWC volunteers; please [let us know](#) if you encounter any problems in this area.

Parking: On the west end, there is the nice big seasonal Canyon Falls MDOT Park and parking area where there is good DAY TIME parking. No overnight parking is allowed in this seasonal MDOT parking lot. **For overnight parking**, you could contact the Alberta Ford Center, a Michigan Tech remote campus just one mile north of the MDOT parking at Canyon Falls [on this map](#) to ask about possible overnight parking on their campus.

906-487-3673 fordcenter@mtu.edu If you park overnight on their campus, [leave a note](#) in your car with your contact info and when you expect to return to your car.

Info about the Alberta Ford Center that has dorms, cabins, cafeteria, showers etc:

<http://www.mtu.edu/forest/fordcenter/>

Here is Alberta lodging info:

<http://www.mtu.edu/forest/fordcenter/conference/lodging/>

Alberta Dining: <http://www.mtu.edu/forest/fordcenter/conference/dining/>

The east end of the segment, ends at OLD US41 road at the Humpback bridge. OLD US41 is a dirt two track that can usually be driven in the summer from US41 north of the MDOT Park to the Humpback bridge [on this map](#) unless the 2 track has been rutted up when still soft in the spring or after rains.

Winter: When they lock the MDOT Canyon Falls trailhead Park gate for the winter about November 1st, there is room for about 5 cars to park perpendicular in front of the locked gate. Cars parked on the shoulder of US41 may get a ticket. No overnight winter parking at the locked gate or along US41, the plow needs to clear out the small space in front of the locked gate. On the east end, OLD US 41 is not winter plowed. Snowmobiles use much of OLD US41 as snowmobile trail #8 in the winter.

Segment 59 map:

Canyon Falls to Humpback Bridge on Sturgeon River



Segment 60

Humpback Bridge at Sturgeon River to private Camp Road just W of Power Line

Length: 1.3 miles

Ownership: private ownership

Responsible for maintenance: Peter Wolfe Chapter Volunteers

Developments along trail: There is a directional NCT post sign at the west end of this Segment near the Humpback bridge over the Sturgeon River on Old US-41. This trail is blue NCT paint blazed. Future short boardwalks will be installed when permission is obtained.

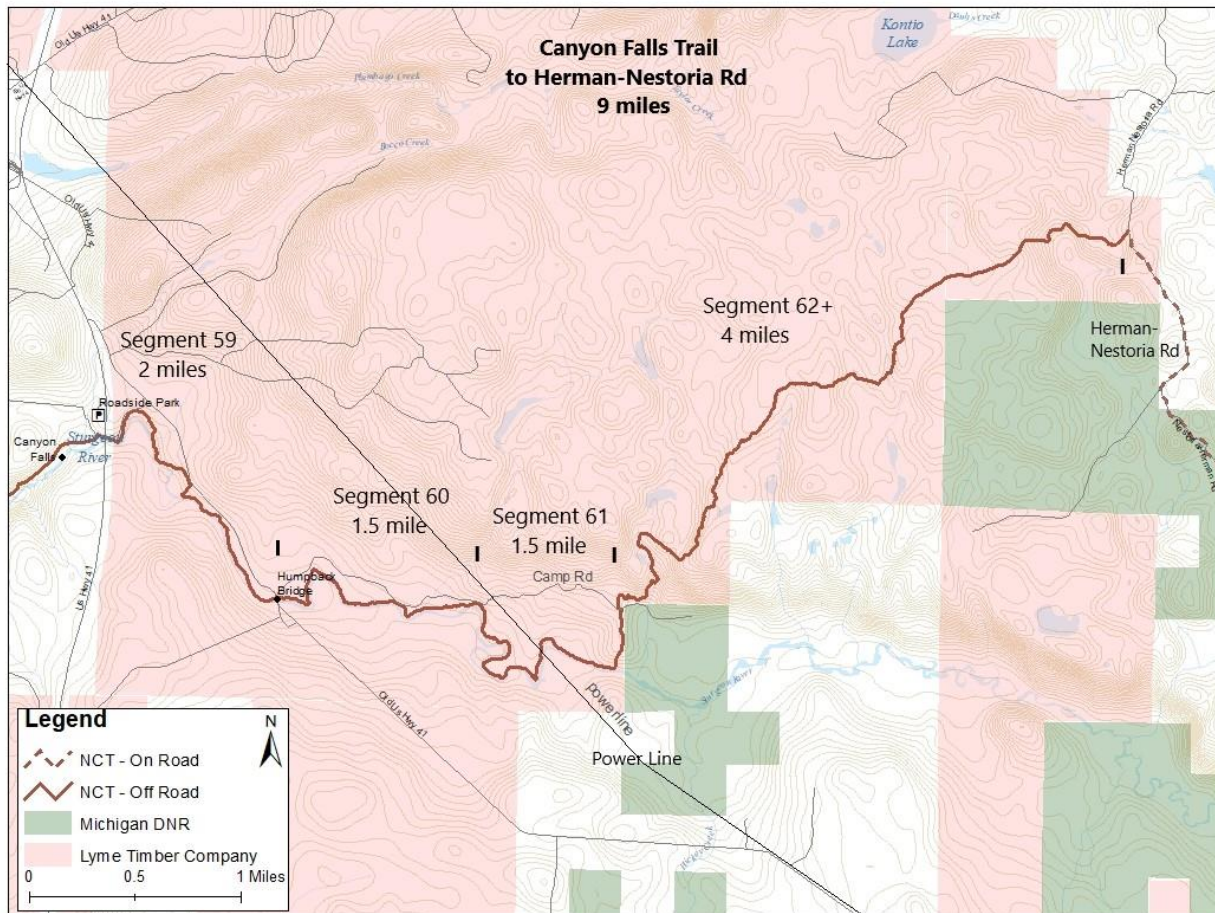
General description of segment: The west end of Segment 60 begins at the directional NCT sign post at the Humpback Bridge and stays on the north side of the river. The trail mostly follows upstream on the North side of the river but goes up and down some steep benched trails on hills when needed to stay dry. The east end of this segment is just west of where the Power Line crosses the camp road, look for ribbons for spur trail between the NCT and the camp road. (The ribbons on this spur trail will soon be replaced by painted white blazes.)

Trail conditions: This is new trail and a nice hike mostly along the river. Being so close to the river, it is prone to be wet or muddy especially in the spring. Maintained and blazed annually by

PWC volunteers; please [let us know](#) if you encounter any problems in this area.

Parking: On the west end, there is seasonal parking near the Humpback Bridge on OLD US 41. OLD US41, which is a dirt two track road. It can usually be driven from US41 north of the MDOT Canyon Falls Park to the Humpback bridge [on this map](#) unless the 2 track has been rutted up when still soft by 4 wheel drives or logging trucks etc. On the east end, vehicles can park *in the Power Line open space*; do not park on the camp road or block the gate across the camp road, east of the Power Line. This camp road will probably need a high clearance 4 wheel drive vehicle, especially when the two track road has been rutted up when still soft by 4 wheel drives or logging trucks etc.

In winter: There is no driving access to this segment in the winter. OLD US 41 is not plowed. Note, snowmobiles use much of OLD US41 as snowmobile trail #8 in the winter.



Segment 61

Camp Road just W of Power Line

to the NCT crossing of the boulder creek on the North side of the 2-track camp road

Length: 2.04 miles

Ownership: private ownership

Responsible for maintenance: Peter Wolfe Chapter Volunteers

Developments along trail: Future short board walks will be put in when permission is obtained.

General description of segment: The west end of Segment 61 is just west of the Power Line, look for ribbons for a spur trail between the NCT and the camp road. (The ribbons on this spur will soon be replaced by painted white blazes.) The trail mostly follows the river until it makes a sharp turn north heading away from the river for about a half mile to where it comes to the camp road; it crosses the 2-track camp road and ends at the fast moving boulder creek.

Trail conditions: This is a new trail and a nice hike along the river, then makes a sharp turn north, crosses the 2 track continues about a half mile to a fast moving creek. Use care in crossing the creek on big boulders to get to the next segment. When close to the river, it is prone to be wet or muddy especially in the spring. Maintained and blazed annually by PWC volunteers; please [let us know](#) if you encounter any problems in this area.

Parking: In general there is no driving access to this segment by street vehicles.

On the west end, high clearance vehicles capable of driving on the two track camp road, can park in the Power Line open space; do not park on the camp road or block the locked gate east of the Power Line. This camp road will probably need a high clearance 4 wheel drive vehicle, especially when the two track road has been rutted up when still soft by 4 wheel drives or logging trucks etc. The east end of this segment is blocked by a locked gate on private property, just east of the Power Line. So after parking in the Power Line area, to get to east end of segment, you can walk east on the camp road about 0.8 mile to where the NCT crosses the camp road then turn north and walk to the boulder creek crossing.

In winter: There is no driving access to this segment in the winter. OLD US 41 is not plowed; Snowmobiles use much of OLD US41 as the busy snowmobile trail #8 in the winter. The east end of the segment is blocked by a locked gate on private property.

Segment 62

Creek crossing

to Herman-Nestoria Road

Length: 3.78 miles

Ownership: private ownership

Responsible for maintenance: Peter Wolfe Chapter Volunteers

Developments along trail: NCT logo on a carsonite strip on tree on east end off Herman-Nestoria road.

General description of segment: The west end of Segment 62 is where the NCT crosses a fast moving creek downstream from a beaver dam. Use caution crossing this creek. This creek has large boulders to step on that help get across but in spring melt off or after heavy rains, the creek would be difficult to cross. There are several other minor creeks to cross in this segment that are usually easy to cross without wading thru water. There are hills and valleys and several old logging roads and several recently reconditioned logging roads the trail crosses.

Trail conditions: This is new trail and a nice hike on hills/valleys/streams. Maintained and blazed annually by PWC volunteers; please [let us know](#) if you encounter any problems in this area.

Parking: There is no parking on the west end of this segment due to locked gate on private property. At the east end of this segment, there is parking for 2 or 3 cars just west off Herman-Nestoria road at the red dot [here](#) and more open parking area across the road there, slightly south east of the NCT junction with Herman-Nestoria road. The Herman-Nestoria road [on this map](#) is a well maintained *seasonal* graveled road, not plowed in winter.

In winter: There is no driving access to this segment in the winter; they stop plowing Herman-Nestoria road just north of the NCT crossing and they do not plow the 7 miles south of the NCT junction on H-N road to US41.

Temp Route: from NCT junction with Herman-Nestoria Road To Long Lake, the eastern terminus of PWC

Temp NCT Route, until the fall of 2023:

The temp route from the NCT junction with Herman-Nestoria road [follows this path](#) on roads. A street vehicle can drive on the Herman-Nestoria road to US41. But a high clearance vehicle would be needed leaving US 41 on North Nestoria road and especially on Long Lake Road on private land.

Walking description:

1. From the east end of Segment 62, turn south on the Herman-Nestoria road and walk 7.1 miles on Herman-Nestoria road to US 41. Herman-Nestoria road is a well maintained seasonal graveled road with very few vehicles per day. Fun to watch for moose tracks on this road!
2. Turn east on US41 and walk 1.1 miles on US41 to North Nestoria road. You will pass by [Cozy Inn and bar/grill](#) 906-272-2675 on US41 which has varied open days/hours, so call ahead if you hope to eat there. There is No lodging here but good food. (If you want to walk another 3 miles on US41 there is Michigamme at Three Lakes with Seasonal lodging at [Bear Paw Inn](#) 906-353-

6256 located at 27672 US-41, Michigamme, MI. If you want to walk *another* 4 miles *further east* of the Bear Paw Inn, there is the [Michigamme Market](#).) There is a campground at [Van Riper State Campground](#), which is 15 miles from the US41 – North Nestoria intersection. There is the [Mount Shasta Restaurant](#) on US-41 which is 8.5 miles on US-41 from the Cozy Inn. This is the building that the 1959 movie Anatomy of a Murder was filmed.

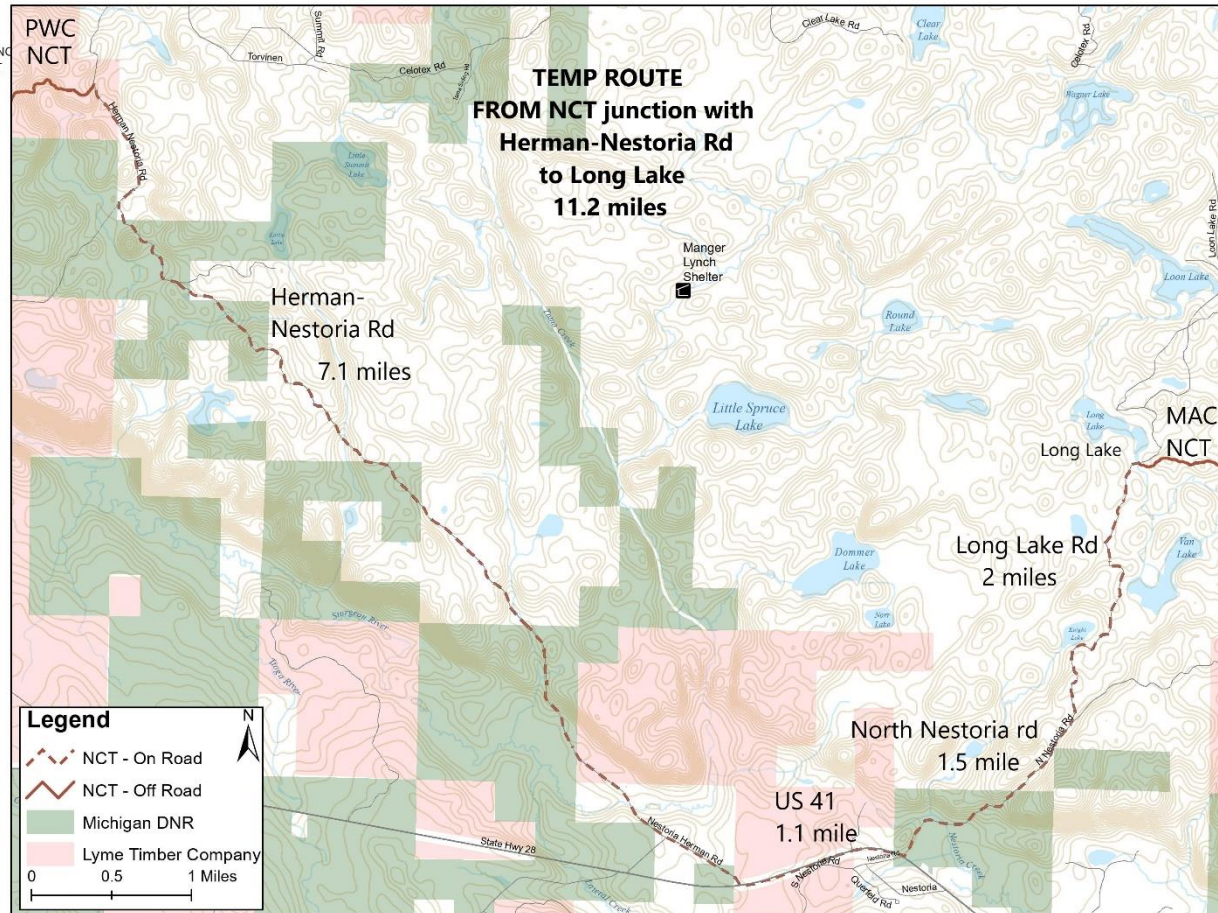
3. Turn northeast off of US41 onto North Nestoria road and walk 1.5 miles to a Y in the gravel road, stay left ie northwest onto Long Lake road.

4. At the Y, stay left onto the 2 track Long Lake Road for 2 miles to Long Lake. NOTE: Watch for the blue ribbons or blue blazes at the Ys to stay on the road. There are driveways off of the 2 track roads here that look much better than the road itself, so be careful to stay on the road rather than Y off on a nice private driveway. No camping all along these private roads.

5. About a hundred feet north past the culvert between the stream and Long Lake, make a sharp right turn East onto the NCT that leaves the 2 track road and goes into the forest; this enters the [Marquette Area Chapter](#) trail.

Parking: There is no easy access the east end of the PWC chapter at Long Lake. We park on the side of the North Nestoria road near the intersection with US41 and walk or bicycle the 3.5 miles from US41 to Long Lake. In part because a high clearance, 4 wheel drive vehicle is needed for this road And, there is no parking area on the private land/road at Long Lake.

Map of this route from the NCT junction with the Herman-Nestoria Road to Long Lake is below:



Future NCT from the NCT junction with Herman-Nestoria road: there will be a path on remote roads and on our new off-road NCT trail on private land which has already been cut thru but needs more TLC on its tread etc summer of 2023. That path will remove walking on US41 and also leads to a NCT shelter on private land you can see on the map above. It will be the official NCT route when the roughed in trail is improved, blue blazed and put on the online NCT map, perhaps by the fall of 2023.

East of our chapter from here is the [Marquette Area Chapter](#) of the NCTA

Notes for LD hikers walking to Marquette:

There are no stores for 71 miles from the eastern end of the PWC at Long Lake until you get to Marquette. Or 91 miles eastbound on the NCT from US41 at Canyon Falls trailhead; Canyon Falls TH is 9 miles on US41 to L'Anse.

That is a long way without a store, so we want hikers to know this before you leave the US41 area!

The first and closest store from the PWC at Long Lake eastbound to Marquette is a party store called EZ Stop (920 **Wright St**, Marquette, Michigan) from mile 274.5 walk west 0.7 mile on Wright Street to the corner of Sugar Loaf Ave/Wright Str [on this map](#). Then...

Then, as you continue on the trail to downtown Marquette, you will pass by a farmer's market-type store called [Lakeshore Depot](#) (560 Fern Pl, Marquette, MI) a block west of the trail from about mile 275.7

Finally, when you reach downtown Marquette, from mile 276.6 you could walk 0.4 mile west on Washington Street to the [Marquette Food Co-op](#) (502 W Washington St, Marquette, MI).

All the bigger grocery and box stores are west of Marquette and not in convenient locations to the trail.

If you are looking for resupply items like shoes or equipment; [Getz's](#) (218 S Front St, Marquette, MI), [Queen City Running](#) (130 W Baraga Ave, Marquette, MI), or [Down Wind Sports](#) (514 N 3rd St, Marquette, MI) are in downtown Marquette and walkable from the trail.